

Jozsef Molnar

Deutsch: Jozsef Molnar, ursprünglich Ungar aber jetzt Schweizer Bürger, war Solo Horn im Kammer-orchester von Lausanne von 1958 bis 1997. Seitdem hat er seine soloistische und pädagogische Tätigkeit dem Alphorn gewidmet.

Er hat eigentlich dieses Nationalsymbol in die Welt der Konzert- und Kirchenmusik eingeführt. Als erster bestellte er Werke von Komponisten wie Jean Daetwyler, Etienne Isoz, Gottfried Aegler, Hans-Jürg Sommer und Ferenc Farkas.

Echter Botschafter des Alphorns, der schon über 1200 Konzerte als Solist gegeben hat, hat er 28 Platten und CDs eingespielt. Die drei letzten, die noch erhältlich sind, wurden in Zusammenarbeit mit der virtuosen Akkordeonistin Maryse Zeiter gemacht.

Jozsef Molnar hat dieses prachtvolle Instrument in vielen Länder der Welt bekannt gemacht: Japan, Ungarn, Oesterreich, Spanien, Holland, Frankreich, Italien, Deutschland, Südafrika, Israel und Singapur.

Im Jahr 1977 war er an der *Fête des Vignerons* engagiert, um den unvergesslichen Bernard Romanens zu begleiten.

Jozsef Molnar wirkte auch als Solist in den Vereinigten Staaten, mit dem Philadelphia-Orchester unter der Leitung von Eugene Ormandy, und am Salzburger Festspiel, begleitet von den Luzerner *Festival Strings* und vom *English Chamber Orchestra* unter der Leitung von Yehudi Menuhin.

English: Of Hungarian origin, though a Swiss citizen, Jozsef Molnar was principal horn in the Lausanne Chamber Orchestra from 1958 to 1997. Since then he has concentrated his activities as soloist and teacher on the alphorn.

Jozsef Molnar was actually responsible for introducing this Swiss national symbol to the concert hall and church music. He was the first to commission works from composers such as Jean Daetwyler, Etienne Isoz, Gottfried Aegler, Hans-Jürg Sommer and Ferenc Farkas.

A real ambassador of the alphorn, who has given over 1200 concerts as a soloist, he has recorded 28 LPS and CDs. The three latest, which are still available, were made in collaboration with the virtuoso accordionist Maryse Zeiter.

Jozsef Molnar has made this magnificent instrument known in many countries: Japan, Hungary, Austria, Spain, Holland, France, Italy, Germany, South Africa, Israel and Singapur.

In 1977 he was asked to accompany the unforgettable Bernard Romanens at the *Fête des Vignerons*.

Jozsef Molnar has also appeared as soloist in the USA with the Philadelphia Orchestra conducted by Eugene Ormandy, and at the Salzburg Festival, accompanied by the Lucerne Festival Strings and by the English Chamber Orchestra under Yehudi Menuhin.

Français: D'origine hongroise mais de nationalité suisse, Jozsef Molnar a été cor-solo de l'Orchestre de Chambre de Lausanne de 1958 à 1997. Depuis lors, il consacre toutes ses activités musicales en sa qualité de soliste et de professeur de cor des Alpes.

L'introduction de ce symbole national dans les salles de concerts ainsi que dans les Eglises, est due aux initiatives de Jozsef Molnar. Il est le premier à faire appelle à des compositeurs tels que: Jean Daetwyler, Etienne Isoz, Gottfried Aegler, Hans-Jürg Sommer ou Ferenc Farkas.

Véritable ambassadeur du cor des Alpes, avec plus de 1200 concerts à son actif comme soliste, il a enregistré 28 disques et CDs, dont les trois derniers – toujours disponibles – ont été réalisés en collaboration avec l'accordéoniste virtuose, Maryse Zeiter.

Jozsef Molnar a su faire connaître ce magnifique instrument dans le monde entier; Japon, Hongrie, Autriche, Espagne, Hollande, France, Italie, Allemagne, Afrique du Sud, Israël et Singapur.

Il est sollicité pour accompagner l'inoubliable Bernard Romanens lors de la Fête des Vignerons de 1977.

Jozsef Molnar s'est également produit aux USA en tant que soliste lors de plusieurs concerts donnés avec l'Orchestre de Philadelphia sous la direction d'Eugène Ormandy, il a été invité au Festival de Salzburg, accompagné par le *Festival Strings Lucerne*, et par *L'English Chamber Orchestra* dirigé par Yehudi Menuhin.



EDITIONS MARC REIFT

Route du Golf 150 • CH-3963 Crans-Montana (Switzerland)

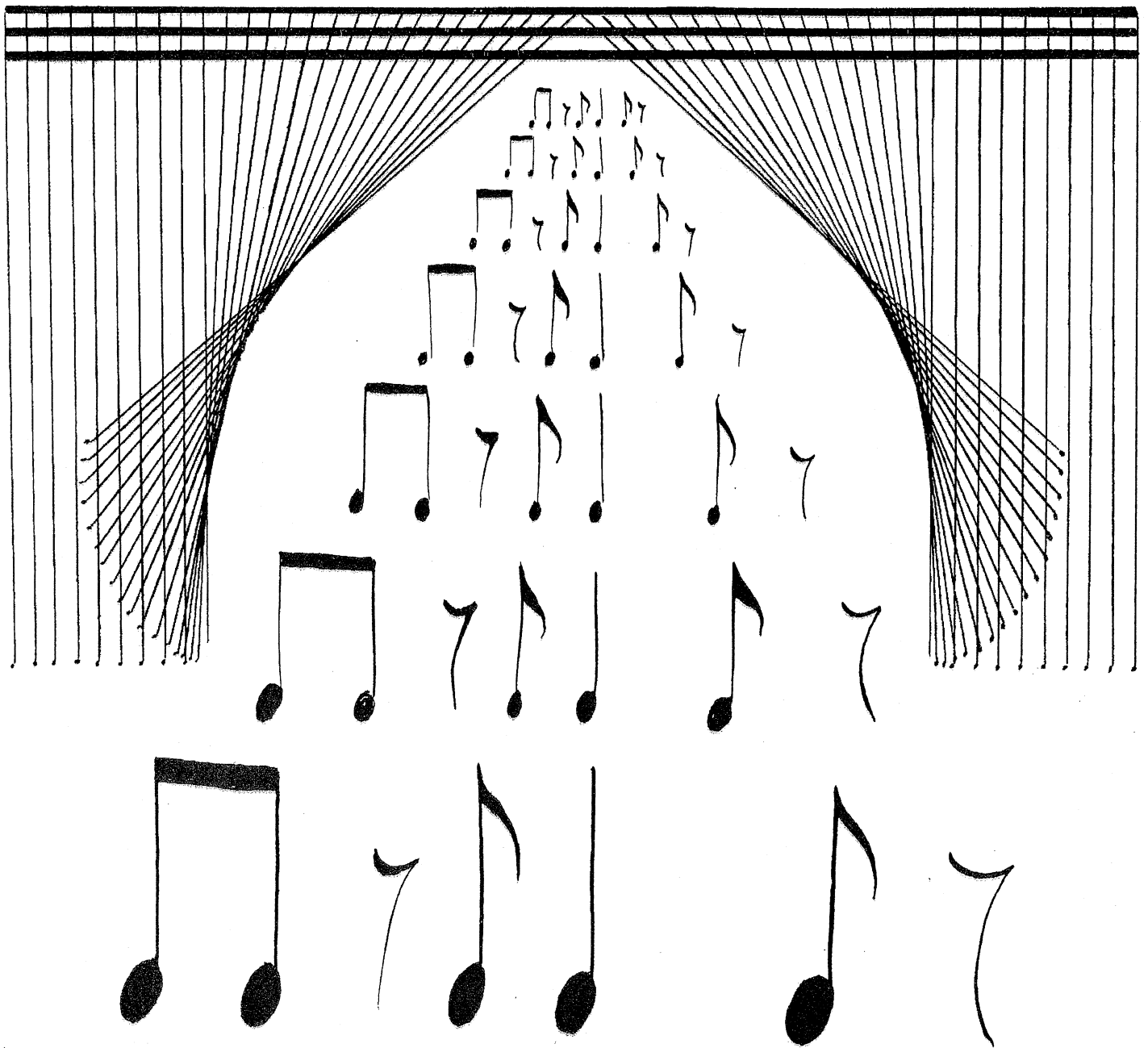
Tel. + 41 (0) 27 483 12 00 • Fax + 41 (0) 27 483 42 43 • E-Mail : info@reift.ch • www.reift.ch

Les notes du Cor des Alpes



A musical staff in treble clef showing the notes of the Alpine Horn. The notes are: C, G, C, E, G, B, C, D, E, Fis, G, As, B, H, C. Below the staff, the corresponding solfège labels are: Do, Mi, Sol, Sib, Do, Ré, Mi, Fa#, Sol, Lab, Sib, Si, Do. The notes are written as half notes on a five-line staff.

C G C E G B C D E Fis G As B H C
Do Mi Sol Sib Do Ré Mi Fa# Sol Lab Sib Si Do
Do Sol



Leçon 1

C
Do



1



2



3



4



5



6



7



8



9



10



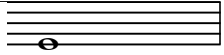
11



12



Leçon 2

E
Mi 

Leçon 3

C - E
Do - Mi

Musical notation showing two notes on a five-line staff. The first note is on the first line (C) and the second note is on the second line (E). Below the staff, the text 'C - E' and 'Do - Mi' is written.

1

Musical notation for exercise 1, consisting of two staves of music in 4/4 time. The first staff contains a sequence of quarter notes and rests, and the second staff contains a sequence of quarter notes and rests.

2

Musical notation for exercise 2, consisting of one staff of music in 4/4 time. The staff contains a sequence of quarter notes and rests.

3

Musical notation for exercise 3, consisting of one staff of music. It starts in 3/4 time and changes to 4/4 time. The staff contains a sequence of quarter notes and rests.

4

Musical notation for exercise 4, consisting of one staff of music in 4/4 time. The staff contains a sequence of quarter notes and rests.

5

Musical notation for exercise 5, consisting of one staff of music in 4/4 time. The staff contains a sequence of quarter notes and rests.

6

Musical notation for exercise 6, consisting of one staff of music in 4/4 time. The staff contains a sequence of quarter notes and rests, with a 'v' (accendo) mark above the final note.

7

Musical notation for exercise 7, consisting of one staff of music in 4/4 time. The staff contains a sequence of quarter notes and rests, with a 'v' (accendo) mark above the third note.

8

Musical notation for exercise 8, consisting of one staff of music. It starts in 3/4 time and changes to 4/4 time. The staff contains a sequence of quarter notes and rests, with a 'v' (accendo) mark above the final note.

9


Musical notation for exercise 9, consisting of one staff of music in 4/4 time. The staff contains a sequence of quarter notes and rests.

10

Musical notation for exercise 10, consisting of one staff of music. It starts in 3/4 time and changes to 4/4 time. The staff contains a sequence of quarter notes and rests.Musical notation for exercise 11, consisting of one staff of music in 4/4 time. The staff contains a sequence of quarter notes and rests.


Leçon 4

C - E
Do - Mi




leçon 5

C - E
Do - Mi

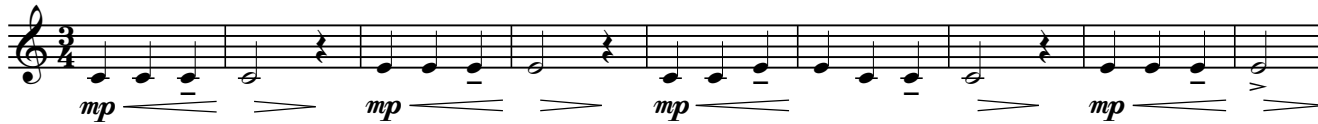


1  3x

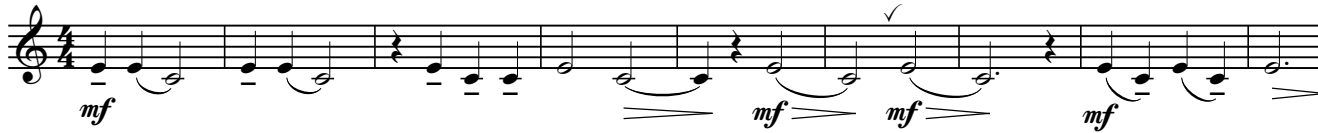
2  3x

3  3x

4  3x
mf

5  mp

 3x
mf

6  mf

 3x
mf

7  mf

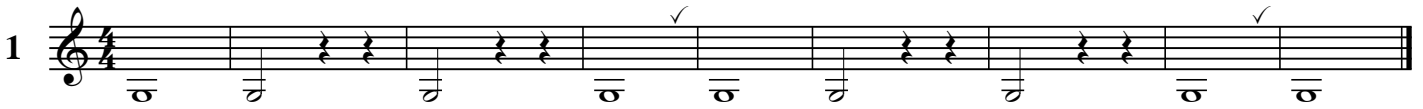
 3x
mf

8  3x
mp

9  3x
mp

Leçon 6

G Sol 

1 

2 

3 


4 

5 

6 

7 

8 

9 



10 



Leçon 7

G - C - E
Sol - Do - Mi



1  3x

2  3x

3  3x

4  3x

5 

 3x

6  3x

 3x

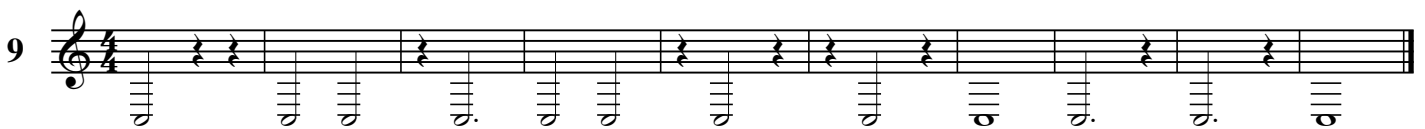
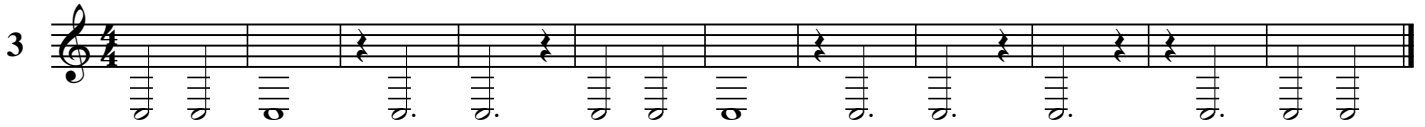
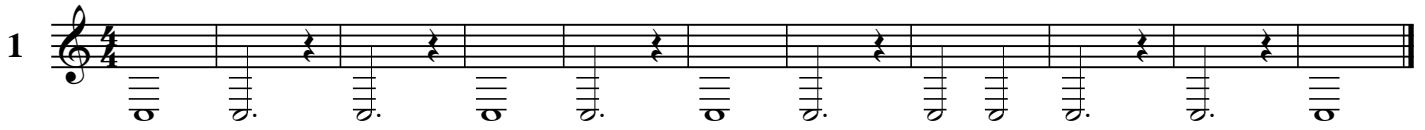
7 

 3x

8  3x

9  3x

Leçon 8



Leçon 9

C - G - C - E
Do - Sol - Do - Mi



1  3x

2  3x

3  3x

4  3x

5  3x

6  3x

7  3x

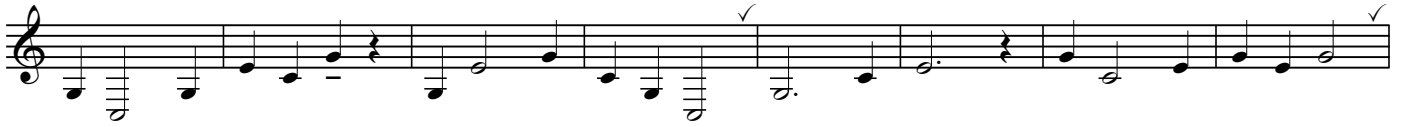
8  3x

9  3x

10  3x

11  3x

12  2x

Leçon 10C - G - C - E - G
Do - Sol - Do - Mi - Sol

Leçon 11

C - G - C - E - G
Do - Sol - Do - Mi - Sol



♩ = 88

1 3x

2

3

4

5

Leçon 12

C - G - C - E - G
Do - Sol - Do - Mi - Sol

♩ = 88



ALPHORN

ALPHORN

EMR 728	ISOZ, Etienne	Résonances et Anniversaire
EMR 737	MOLNAR, Jozsef	100 Valses et 10 Humoresques
EMR 4359	MOLNAR, Jozsef	18 Cartes de Visites
EMR 799	MOLNAR, Jozsef	18 Humorous Pieces
EMR 799	MOLNAR, Jozsef	18 Lustige Stücke
EMR 799	MOLNAR, Jozsef	18 Pièces Amusantes
EMR 4359	MOLNAR, Jozsef	18 Visitenkarten
EMR 737	MOLNAR, Jozsef	25 Cartes de Visites
EMR 737	MOLNAR, Jozsef	25 Visitenkarten
EMR 798	MOLNAR, Jozsef	58 Daily Drills
EMR 798	MOLNAR, Jozsef	58 Exercices Journaliers
EMR 798	MOLNAR, Jozsef	58 Tägliche Übungen
EMR 18363	MOLNAR, Jozsef	Compositions Florales
EMR 4462	MOLNAR, Jozsef	Eine Woche mit dem Alphorn
EMR 793	MOLNAR, Jozsef	Initiation au Plaisir
EMR 4488	MOLNAR, Jozsef	La Joie sur les 12 notes du Cor des Alpes
EMR 742	MOLNAR, Jozsef	Méthode de Rythme
EMR 4462	MOLNAR, Jozsef	Rendez-vous avec le Cor des Alpes...
EMR 709	STURZENEGGER, K.	16 Stücke für Alph. (Solos/Duets F+G)
EMR 711	STURZENEGGER, K.	8 Trios & Quartettes (Alphorn in F + Gb)

ALPHORN & PIANO

EMR 776	AEGLER, Gottfried	Jozsef in Form (Alphorn in F)
EMR 775	AEGLER, Gottfried	Jozsef in Form (Alphorn in Gb)
EMR 774	AEGLER, Gottfried	Alphorn Polka (Alphorn in F)
EMR 773	AEGLER, Gottfried	Alphorn Polka (Alphorn in Gb)
EMR 786	DAETWYLER, Jean	Abendlied (Alphorn in F)
EMR 785	DAETWYLER, Jean	Abendlied (Alphorn in Gb)
EMR 784	DAETWYLER, Jean	Bergsuite (Alphorn in F)
EMR 783	DAETWYLER, Jean	Bergsuite (Alphorn in Gb)
EMR 786	DAETWYLER, Jean	Chant du Soir (Alphorn in F)
EMR 785	DAETWYLER, Jean	Chant du Soir (Alphorn in Gb)
EMR 768	DAETWYLER, Jean	Dialogue Concertant (Alphorn in F)
EMR 767	DAETWYLER, Jean	Dialogue Concertant (Alphorn in Gb)
EMR 786	DAETWYLER, Jean	Evening Song (Alphorn in F)
EMR 785	DAETWYLER, Jean	Evening Song (Alphorn in Gb)
EMR 770	DAETWYLER, Jean	Humoresque (Alphorn in F)
EMR 769	DAETWYLER, Jean	Humoresque (Alphorn in Gb)
EMR 784	DAETWYLER, Jean	Mountain Suite (Alphorn in F)
EMR 783	DAETWYLER, Jean	Mountain Suite (Alphorn in Gb)
EMR 784	DAETWYLER, Jean	Suite Montagnarde (Alphorn in F)
EMR 783	DAETWYLER, Jean	Suite Montagnarde (Alphorn in Gb)
EMR 725	ISOZ, Etienne	Andante et à la musette (Alph. in Gb)
EMR 723	MAGNIER, François	Poème Irlandais (Alphorn in Gb)
EMR 741	MORTIMER, J.G.	Alpine Cowboy (Alphorn in Gb)
EMR 755	MORTIMER, J.G.	Big Ben Suite (F)
EMR 756	MORTIMER, J.G.	Big Ben Suite (Gb)
EMR 740	MORTIMER, John G.	Alpine Cowboy (Alphorn in F)
EMR 714	MORTIMER, John G.	Alpine Rhapsody (Alphorn in F)
EMR 721	MORTIMER, John G.	Alpine Rhapsody (Alphorn in Gb)
EMR 748	MOZART, Leopold	Sinfonia Pastorella (Alphorn in F)
EMR 19278	MOZART, Leopold	Sinfonia Pastorella (Alphorn in G)
EMR 760	MOZART, Leopold	Sinfonia Pastorella (Alphorn in Gb)
EMR 732	PRINTEMPS, Guy	Adagio et Dance (Alphorn in Gb)
EMR 739	REBER Peter	Swiss Lady (Alphorn in F)
EMR 738	REBER Peter	Swiss Lady (Alphorn in Gb)
EMR 743	REIFT, Marc	Schweiz. Volkslied (Alph. F + Gb)
EMR 701	RUETTI, Carl	Konzert (Alphorn in F)
EMR 772	SOMMER, Hans-Jürg	A Bout de Souffle (Alphorn in F)
EMR 771	SOMMER, Hans-Jürg	A Bout de Souffle (Alphorn in Gb)
EMR 772	SOMMER, Hans-Jürg	Ausser Atem (Alphorn in F)
EMR 771	SOMMER, Hans-Jürg	Ausser Atem (Alphorn in Gb)
EMR 780	SOMMER, Hans-Jürg	Largo (Alphorn in F)
EMR 779	SOMMER, Hans-Jürg	Largo (Alphorn in Gb)
EMR 772	SOMMER, Hans-Jürg	Out Of Breath (Alphorn in F)
EMR 771	SOMMER, Hans-Jürg	Out Of Breath (Alphorn in Gb)
EMR 734	STURZENEGGER, K.	Cassation (Alphorn in F)
EMR 708	STURZENEGGER, K.	Cassation (Alphorn in Gb)
EMR 736	TAILOR, Norman	Watering the Periwinkles (Alphorn G)
EMR 735	TAILOR, Norman	Watering the Periwinkles (Alph. in F)
EMR 762	TRADITIONAL	Amazing Grace (Alphorn in F)
EMR 761	TRADITIONAL	Amazing Grace (Alphorn in Gb)
EMR 726	TRADITIONAL	Ranz des Vaches (Alph. in F + Gb)
EMR 788	TSCHANNEN, Fritz	Alpine Idyll (Alphorn in F)
EMR 787	TSCHANNEN, Fritz	Alpine Idyll (Alphorn in Gb)

ALPHORN & PIANO (ORGAN)

EMR 702	ARMITAGE, Dennis	Alphorn Ballad (Alphorn in F + Gb)
EMR 720	ARMITAGE, Dennis	Alphorn Serenade (Alphorn in F + Gb)
EMR 703	JAMES, Ifor	Alphorn Memory (Alphorn in Gb)

Alphorn & Piano (Organ) (Fortsetzung - Continued - Suite)

EMR 734	STURZENEGGER, K.	Cassation (Alphorn in F)
EMR 708	STURZENEGGER, K.	Cassation (Alphorn in Gb)
EMR 719	TRADITIONAL	Amazing Grace (1, 2 or 3 Alph. F+Gb)
EMR 726	TRADITIONAL	Ranz des Vaches (Alph. in F + Gb)

ALPHORN & PIANO (DRUMS & BASS GUITAR OPTIONAL)

EMR 739	REBER Peter	Swiss Lady (Alphorn in F)
EMR 738	REBER Peter	Swiss Lady (Alphorn in Gb)

ALPHORN & ORGAN

EMR 753	DAETWYLER, Jean	Andante and Humoresque (Alph. in F)
EMR 754	DAETWYLER, Jean	Andante and Humoresque (Alph. in Gb)
EMR 707	GLEISSNER, W.	Alphorn und Orgel (Alph. F + Gb)
EMR 724	GRETY, André E. M.	Guillaume Tell (Molnar) (Alph. in Gb)
EMR 727	ISOZ, Etienne	Kermesse (Alphorn in F#)
EMR 731	ISOZ, Etienne	Récitatif et Prière (Alphorn in F#)
EMR 733	PRINTEMPS, Guy	Adagio et Dance (Alphorn in F#)
EMR 704	RUETTI, Carl	Suite Pastorale (Alphorn in Gb)
EMR 734	STURZENEGGER, K.	Cassation (Alphorn in F)
EMR 708	STURZENEGGER, K.	Cassation (Alphorn in Gb)
EMR 715	STURZENEGGER, K.	Paradis des Montagnes (Alph. in Gb)
EMR 726	TRADITIONAL	Ranz des Vaches (Alph. in F + Gb)

ALPHORN & BRASS BAND

EMR 3150	AEGLER, Gottfried	Alphorn Polka (Alphorn in F)
EMR 3137	AEGLER, Gottfried	Alphorn Polka (Alphorn in Gb)
EMR 1095	ARMITAGE, Dennis	Alphorn Ballad (Alph. in F + Gb)
EMR 1238A	ARMITAGE, Dennis	Alphorn Serenade (Alphorn in F)
EMR 1238B	ARMITAGE, Dennis	Alphorn Serenade (Alph. in Gb)
EMR 9004	DAETWYLER, Jean	Sérénade
EMR 3148	MORTIMER, John G.	Alpine Cowboy (Alphorn F)
EMR 3135	MORTIMER, John G.	Alpine Cowboy (Alphorn in Gb)
EMR 3040	REBER Peter	Swiss Lady (Solo Alphorn Gb)
EMR 3489	REBER, Peter	Swiss Lady (Alphorn in F)
EMR 3008	SCHNEIDERS, Hardy	Watering the Periwinkles (Alph. in Gb)
EMR 3153	SOMMER, Hans-Jürg	A Bout de Souffle (Alphorn in F)
EMR 3140	SOMMER, Hans-Jürg	A Bout de Souffle (Alphorn in Gb)
EMR 11255	SOMMER, Hans-Jürg	Largo
EMR 11256	SOMMER, Hans-Jürg	Largo
EMR 3151	SOMMER, Hans-Jürg	Largo
EMR 3754	SOMMER, Hans-Jürg	Largo
EMR 3755	SOMMER, Hans-Jürg	Largo
EMR 3138	SOMMER, Hans-Jürg	Largo (Alphorn in Gb)
EMR 3152	TRADITIONAL	Amazing Grace (Alphorn in F)
EMR 3139	TRADITIONAL	Amazing Grace (Alphorn in Gb)

ALPHORN & WIND BAND

EMR 10687	AEGLER, Gottfried	Alphorn Polka (Alphorn in F)
EMR 10491	AEGLER, Gottfried	Alphorn Polka (Alphorn in Gb)
EMR 10688	AEGLER, Gottfried	Jozsef in Form (Alphorn in F)
EMR 10492	AEGLER, Gottfried	Jozsef in Form (Alphorn in Gb)
EMR 1562	ARMITAGE, Dennis	Alphorn Ballad (Alphorn in Eb)
EMR 1555	ARMITAGE, Dennis	Alphorn Ballad (Alphorn in F)
EMR 1002	ARMITAGE, Dennis	Alphorn Ballad (Alphorn in Gb)
EMR 1237A	ARMITAGE, Dennis	Alphorn Serenade (Alphorn in F)
EMR 1237B	ARMITAGE, Dennis	Alphorn Serenade (Alph. in Gb)
EMR 10170	DAETWYLER, Jean	Sinfonietta Alpestre (Alphorn in F)
EMR 10501	MORTIMER, John G.	Alpine Cowboy (Alphorn Gb)
EMR 10685	MORTIMER, John G.	Alpine Cowboy (Alphorn in F)
EMR 10204	MOZART, Leopold	Sinfonia Pastorella (Alphorn in F)
EMR 10205	MOZART, Leopold	Sinfonia Pastorella (Alph. in Gb)
EMR 10382	REBER Peter	Swiss Lady (Alphorn in Gb)
EMR 10810	REBER, Peter	Swiss Lady (Alphorn in F)
EMR 10686	SOMMER, Hans-Jürg	A Bout de Souffle (Alphorn in F)
EMR 10486	SOMMER, Hans-Jürg	A Bout de Souffle (Alphorn in Gb)
EMR 10686	SOMMER, Hans-Jürg	Ausser Atem (Alphorn in F)
EMR 10486	SOMMER, Hans-Jürg	Ausser Atem (Alphorn in Gb)
EMR 10673	SOMMER, Hans-Jürg	Largo (Alphorn in F)
EMR 10499	SOMMER, Hans-Jürg	Largo (Alphorn in Gb)
EMR 10686	SOMMER, Hans-Jürg	Out Of Breath (Alphorn in F)
EMR 10486	SOMMER, Hans-Jürg	Out Of Breath (Alphorn in Gb)
EMR 1848	TAILOR, Norman	Watering the Periwinkles (Alph. in F)
EMR 10412	TAILOR, Norman	Watering the Periwinkles (Alph.in Gb)
EMR 10684	TRADITIONAL	Amazing Grace (Alphorn in F)
EMR 10500	TRADITIONAL	Amazing Grace (Alphorn in Gb)