

*The Complete Edition*

# Technische Studien

*Technical Studies - Etudes Techniques*

**Bass Trombone**

**Robert Müller**

EMR 21555

**Print & Listen  
Drucken & Anhören  
Imprimer & Ecouter**



**www.reift.ch**



**EDITIONS MARC REIFT**

Route du Golf 150 • CH-3963 Crans-Montana (Switzerland)

Tel. +41 (0) 27 483 12 00 • Fax +41 (0) 27 483 42 43 • E-Mail : [info@reift.ch](mailto:info@reift.ch) • [www.reift.ch](http://www.reift.ch)

# Technical Exercises I

Exercise in Legato and Staccato - tonguing

# Technische Übungen I

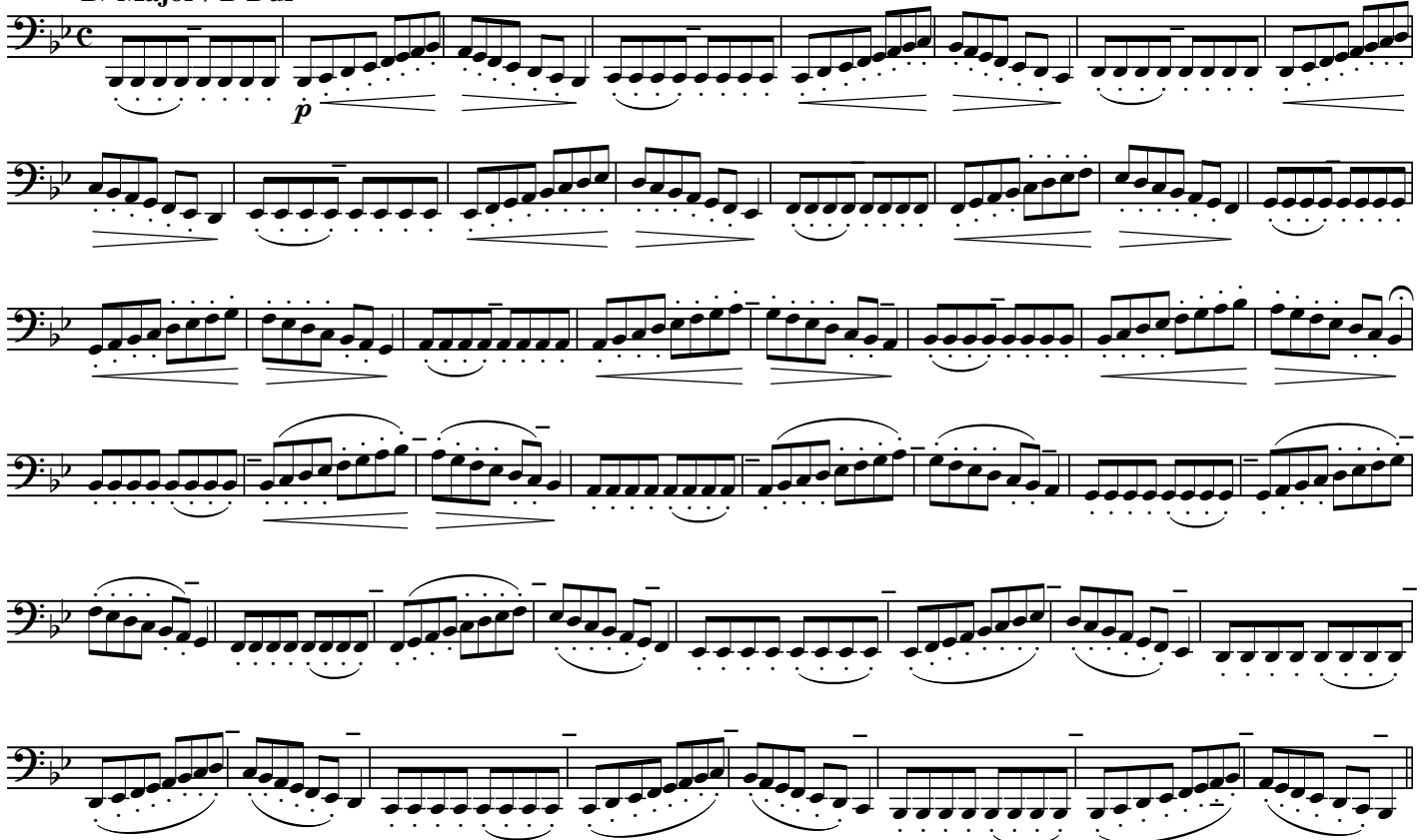
Übung für verdichteten und kurzen Stoss

## Preparatory Exercise / Vorübung



Musical notation for the Preparatory Exercise, consisting of six staves of music in bass clef, B-flat major, and common time. The exercise features a series of eighth-note patterns with slurs and accents, designed for legato and staccato tonguing.

## B $\flat$ Major / B Dur



Musical notation for the B-flat Major section, consisting of six staves of music in bass clef, B-flat major, and common time. The exercise features a series of eighth-note patterns with slurs and accents, designed for legato and staccato tonguing. A dynamic marking of *p* is present at the beginning of the first staff.

EMR 21555

© COPYRIGHT BY EDITIONS MARC REIFT CH-3963 CRANS-MONTANA (SWITZERLAND)  
ALL RIGHTS RESERVED - INTERNATIONAL COPYRIGHT SECURED

[www.reift.ch](http://www.reift.ch)

Staccato - tonguing / Staccato

E♭ Major / Es Dur

This section contains seven numbered staccato exercises in E♭ Major (Es Dur) and common time (C). Each exercise is written on a bass clef staff and consists of a sequence of eighth notes. Exercise 1 is a single line. Exercises 2, 3, 4, 5, 6, and 7 are each presented as a pair of staves, with the second staff being a variation of the first. Exercise 2 features a change in key signature to B♭ Major (B♭ Dur) for its second staff. Exercises 3, 4, 5, 6, and 7 feature a change in key signature to E♭ Major (Es Dur) for their second staves. The exercises are marked with staccato accents and include various articulation marks such as slurs and breath marks.

D Major / D Dur

This section contains two staccato exercises in D Major (D Dur) and common time (C), written on a bass clef staff. The first exercise is a single line. The second exercise is marked with the word *simile* and consists of a sequence of eighth notes, similar in style to the first exercise. Both exercises are marked with staccato accents and include articulation marks.



**D $\flat$  Major / Des Dur** 

**C Major / C Dur**



*simile*



**C $\flat$  Major / Ces Dur** 

B $\flat$  Major / B Dur

*simile*

Musical score for B $\flat$  Major / B Dur in bass clef, common time. The score consists of six staves of music. The first staff begins with a treble clef and a common time signature, followed by a bass clef. The music is written in a single line with a bass clef. The key signature has two flats (B $\flat$  Major). The time signature is common time (C). The music is marked *simile*. The score consists of six staves of music. The first staff begins with a treble clef and a common time signature, followed by a bass clef. The music is written in a single line with a bass clef. The key signature has two flats (B $\flat$  Major). The time signature is common time (C). The music is marked *simile*. The score consists of six staves of music. The first staff begins with a treble clef and a common time signature, followed by a bass clef. The music is written in a single line with a bass clef. The key signature has two flats (B $\flat$  Major). The time signature is common time (C). The music is marked *simile*.

B Major /  
H Dur

Musical score for B Major / H Dur in bass clef, common time. The score consists of one staff of music. The first staff begins with a treble clef and a common time signature, followed by a bass clef. The music is written in a single line with a bass clef. The key signature has two sharps (B Major). The time signature is common time (C).

A Major / A Dur

*simile*

Musical score for A Major / A Dur in bass clef, common time. The score consists of six staves of music. The first staff begins with a treble clef and a common time signature, followed by a bass clef. The music is written in a single line with a bass clef. The key signature has three sharps (A Major). The time signature is common time (C). The music is marked *simile*. The score consists of six staves of music. The first staff begins with a treble clef and a common time signature, followed by a bass clef. The music is written in a single line with a bass clef. The key signature has three sharps (A Major). The time signature is common time (C). The music is marked *simile*.

## Exercise in Chords / Akkord - Übung

From F to B $\flat$  Major /  
Von F nach B Dur

B $\flat$  to E $\flat$  /  
B nach Es

E $\flat$  to A $\flat$  /  
Es nach As

A $\flat$  to D $\flat$  /  
As nach Des

D $\flat$  to G $\flat$  /  
Des nach Ges

G $\flat$  to C $\flat$  /  
Ges nach Ces

C $\flat$  to F $\flat$   
Ces nach Fes

Two staves of music in bass clef, common time. The top staff has a key signature of three flats (C $\flat$ , F $\flat$ , B $\flat$ ). The bottom staff has a key signature of three sharps (F $\sharp$ , C $\sharp$ , G $\sharp$ ). Both staves contain a sequence of eighth notes.

B to E /  
H nach E

Two staves of music in bass clef, common time. The top staff has a key signature of three flats (C $\flat$ , F $\flat$ , B $\flat$ ). The bottom staff has a key signature of three sharps (F $\sharp$ , C $\sharp$ , G $\sharp$ ). Both staves contain a sequence of eighth notes.

E to A /  
E nach A

Two staves of music in bass clef, common time. The top staff has a key signature of three sharps (F $\sharp$ , C $\sharp$ , G $\sharp$ ). The bottom staff has a key signature of three sharps (F $\sharp$ , C $\sharp$ , G $\sharp$ ). Both staves contain a sequence of eighth notes.

A to S /  
A nach D

Two staves of music in bass clef, common time. The top staff has a key signature of three sharps (F $\sharp$ , C $\sharp$ , G $\sharp$ ). The bottom staff has a key signature of three sharps (F $\sharp$ , C $\sharp$ , G $\sharp$ ). Both staves contain a sequence of eighth notes.

D to G /  
D nach G

Two staves of music in bass clef, common time. The top staff has a key signature of three sharps (F $\sharp$ , C $\sharp$ , G $\sharp$ ). The bottom staff has a key signature of three sharps (F $\sharp$ , C $\sharp$ , G $\sharp$ ). Both staves contain a sequence of eighth notes.

G to C /  
G nach C

Two staves of music in bass clef, common time. The top staff has a key signature of three sharps (F $\sharp$ , C $\sharp$ , G $\sharp$ ). The bottom staff has a key signature of three sharps (F $\sharp$ , C $\sharp$ , G $\sharp$ ). Both staves contain a sequence of eighth notes.

C to F /  
C nach F

Two staves of music in bass clef, common time. The top staff has a key signature of one flat (F $\flat$ ). The bottom staff has a key signature of one flat (F $\flat$ ). Both staves contain a sequence of eighth notes.

# Exercises in all Keys / Übungen in allen Tonarten

## 1. F Major / F Dur

*p* *f*

a)

*p* *f* *p* *f* *p* *f* *p*

*simile*

*f* *p* *f* *f* *f*

*f*

1. 2. 3. 4.

b)

*p* *simile*

*f* *p*

*crescendo* *f*

1. 2. 3. 4. 5.

c)

*p* *f* *p* *f* *p* *f* *p* *f* *p* *f*

*p* *f* *p* *f* *f* *p* *f* *p* *f* *p*

*f* *p* *f* *p* *f* *p* *f* *p*

1. 2. 3. 4. a) 5. a) 6. 7.

b) b)



2. D minor / D moll

Musical staff for exercise 2, main melody. Bass clef, C major key signature (two flats), common time signature. The melody consists of eighth and sixteenth notes, ending with a repeat sign.

a) *3 3 3 3 simile*

Musical staff for exercise 2, variation a. Bass clef, C major key signature, common time signature. Features four groups of triplets of eighth notes, followed by a *simile* section.

b) *p simile*

Musical staff for exercise 2, variation b. Bass clef, C major key signature, common time signature. Starts with a *p* dynamic and a *simile* instruction.

Musical staff for exercise 2, variation b continuation. Bass clef, C major key signature, common time signature. Starts with a *p* dynamic and a *7* (seven) measure rest.

Musical staff for exercise 2, variation b continuation. Bass clef, C major key signature, common time signature. Features a *f* dynamic and a *p* dynamic.

Musical staff for exercise 2, variation b continuation. Bass clef, C major key signature, common time signature. Features a *p cresc.* dynamic and a *f* dynamic.

1. 2. 3. 4.

Musical staff for exercise 2, variation b continuation. Bass clef, C major key signature, common time signature. Shows four numbered measures of eighth notes.

3. Bb Major / B Dur

Musical staff for exercise 3, main melody. Bass clef, Bb major key signature (three flats), common time signature. The melody consists of eighth and sixteenth notes.

Musical staff for exercise 3, main melody continuation. Bass clef, Bb major key signature, common time signature.

a) *mf*

Musical staff for exercise 3, variation a. Bass clef, Bb major key signature, common time signature. Starts with a *mf* dynamic.

Musical staff for exercise 3, variation a continuation. Bass clef, Bb major key signature, common time signature. Features a *f* dynamic and a *mf* dynamic.

Musical staff for exercise 3, variation a continuation. Bass clef, Bb major key signature, common time signature. Features a *f* dynamic.

1. 2. 3. 4. 5.

Musical staff for exercise 3, variation a continuation. Bass clef, Bb major key signature, common time signature. Shows five numbered measures of eighth notes.

b) *mf simile*

Musical staff for exercise 3, variation b. Bass clef, Bb major key signature, 3/4 time signature. Starts with a *mf* dynamic and a *simile* instruction.

4. G minor / G moll

b)

1. 2. 3. 4.

5. Eb Major / Es Dur

1. 2. 3. 4. 5.

a)

1. 2.

b)

1. 2. 3. 4. 5.

6. C minor / C moll

a)

a) staccato

1. 2.

b)

7. A $\flat$  Major / As Dur

c)

*p*

*cresc.*..... *f*

*p*

*cresc.*..... *f*

1. 2. 3.

d)

1. 2. 3.

e)

1. 2. 3.

f)



1. 2. 3. 4. 5. 6. 7.



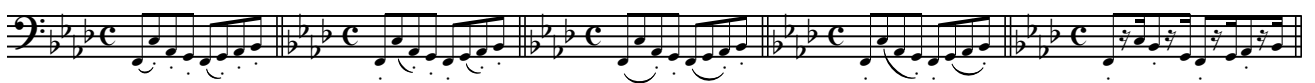
8. F minor / F moll



a)



1. 2. 3. 4. 5.



b)



1. 2. 3.

9. D $\flat$  Major / Des Dur

a)

b) staccato

1. 2.



10. B $\flat$  minor / B moll

*simile*

Exercise 10 consists of five staves of music in B $\flat$  minor, 2/4 time. The first staff contains measures 1-4, and the second staff contains measures 5-8. The music features a continuous eighth-note pattern in the right hand and a bass line in the left hand.

1. 2. 3. 4.

Exercise 10 continues with four staves of music in B $\flat$  minor, 2/4 time, labeled 1, 2, 3, and 4. Each staff contains two measures of music.

a)

*simile*

Exercise 11 consists of five staves of music in G $\flat$  Major, 3/4 time. The first staff contains measures 1-4, and the second staff contains measures 5-8. The music features a continuous eighth-note pattern in the right hand and a bass line in the left hand. Dynamics include *mf* and *f*.

1. 2. a) 3. 4. a) 5.

Exercise 11 continues with five staves of music in G $\flat$  Major, 3/4 time, labeled 1, 2. a), 3, 4. a), and 5. Each staff contains two measures of music.

11. G $\flat$  Major / Ges Dur

Exercise 11 continues with three staves of music in G $\flat$  Major, 3/4 time. The first staff contains measures 14-16, and the second staff contains measures 17-19. The music features a continuous eighth-note pattern in the right hand and a bass line in the left hand.

a)

Musical score for exercise a) in bass clef, 2/4 time, Eb minor. It consists of four staves of continuous eighth-note patterns.

12. Eb minor / Es moll

Musical score for exercise 12 in bass clef, 2/4 time, Eb minor. It features dynamic markings (*mf*, *f*, *p*) and includes first and second endings.

a)

Musical score for exercise a) in bass clef, 2/4 time, Eb minor. It includes the word *simile* and dynamic markings (*mf*, *p*, *f*).

b)

# BASS TROMBONE

## BASS TROMBONE TUTORS

EMR 115	BACHMANN/SLOKAR	Schule für Bassposaune
EMR 109	REIFT, Marc	Rhythmus Schule / School of Rhythm
EMR 119	SLOKAR/BACHMANN	Schule für Posaune mit Quartventil (BC)

## BASS TROMBONE STUDIES

EMR 167	BLAZHEVITCH, V.	70 Studies
EMR 114	VOBARON / RYSER	Etüden für Bassposaune

## SOLO TROMBONE

EMR 2026	AGRELL, Jeffrey	New York Variations
EMR 254	MICHEL, Jean-Fr.	Hommage à Jean Tinguely
EMR 5984	MOUREY, Colette	Sonata da Chiesa
EMR 241	POWELL, Kit	Suite for Solo Trombone
EMR 2183	STURZENEGGER, K.	Les Quatre Tempéraments
EMR 2023	VON GRUNELIUS, W.	emBRASSing Ovid

## BASS TROMBONE & PIANO

EMR 4369	ABREU, Zequinha	Tico-Tico
EMR 8564	ANDREWS, D. (Arr.)	Aura Lee (5)
EMR 8545	ANDREWS, D. (Arr.)	Ciao, Bella, Ciao (5)
EMR 8655	ANDREWS, D. (Arr.)	Funiculi Funicula (5)
EMR 8522	ARMITAGE, Dennis	Alpine Moods (5)
EMR 2024	ARMITAGE, Dennis	Way Down Blues
EMR 19270	BACH, J.S.	Aria
EMR 510N	BACH, Johann S.	Badinerie
EMR 2282N	BARATTO, Paolo	Andantino Amoroso
EMR 2286N	BARATTO, Paolo	Liebeszauber
EMR 2286N	BARATTO, Paolo	Magic Of Love
EMR 2286N	BARATTO, Paolo	Magie de l'Amour
EMR 2180N	BARATTO, Paolo	Paprika (Csardas)
EMR 923N	BEATLES, The	Eleanor Rigby (8)
EMR 923N	BEATLES, The	Hey Jude (8)
EMR 923N	BEATLES, The	I Wanna Hold Your Hand (8)
EMR 923N	BEATLES, The	Michelle (8)
EMR 923N	BEATLES, The	Ob-la-di, Ob-la-da (8)
EMR 923N	BEATLES, The	Penny Lane (8)
EMR 923N	BEATLES, The	Yellow Submarine (8)
EMR 923N	BEATLES, The	Yesterday (8)
EMR 8545	BELLINI, Joe (Arr.)	Banana Boat Song (5)
EMR 8564	BELLINI, Joe (Arr.)	El Choclo (5)
EMR 8522	BELLINI, Joe (Arr.)	Just A Closer Walk With Thee (5)
EMR 8677	BELLINI, Joe (Arr.)	Mexican Hat Dance (5)
EMR 8522	BELLINI, Joe (Arr.)	Yankee Doodle (5)
EMR 292	BJELINSKI, B.	Drei Biblische Legenden
EMR 2217	BOEHME, Oskar	Danse russe
EMR 2217	BOEHME, Oskar	Russian Dance
EMR 2217	BOEHME, Oskar	Russischer Tanz
EMR 2168N	DANE, Mary	Las Cañadas
EMR 209	DVARIONAS, B.	Thema & Variationen
EMR 2310	FILLMORE, Henry	15 Rags
EMR 305N	FRANCK, Melchior	Suite de Danses (Sturzenegger)
EMR 4355	GAY, Bertrand	5 Liebeslieder
EMR 4355	GAY, Bertrand	5 Love-Songs
EMR 4355	GAY, Bertrand	5 Mélodies d'Amour
EMR 4308	GAY, Bertrand	5 Minouteries
EMR 8611	GERSHWIN, George	Bess, You Is My Woman Now (5)
EMR 8589	GERSHWIN, George	I Got Plenty O' Nuttin' (5)
EMR 8677	GERSHWIN, George	Strike Up The Band (5)
EMR 8633	GERSHWIN, George	Swanee (5)
EMR 2007	GUILMANT, A.	Morceau Symphonique
EMR 302N	HÄNDEL, Georg Fr.	Prelude & Fugue (Sturzenegger)
EMR 8633	HANDY, W.C.	St. Louis Blues (5)
EMR 8589	IVANOVICI, Ivan	Donauwellen (5)
EMR 8677	JOPLIN, Scott	Easy Winners (5)
EMR 8564	JOPLIN, Scott	Elite Syncopations (5)
EMR 8611	JOPLIN, Scott	The Entertainer (5)
EMR 216	KOETSIER, Jan	Allegro Maestoso
EMR 273	KOETSIER, Jan	Falstaffiade
EMR 2189	KRIVOKAPIC, Igor	Rhapsody
EMR 307N	LOEILLET, J.B.	Sonate en Do Majeur (Sturzenegger)
EMR 8545	MACDUFF, G. (Arr.)	Bill Bailey (5)
EMR 8611	MACDUFF, G. (Arr.)	Charlie Is My Darling (5)
EMR 8655	MACDUFF, G. (Arr.)	Marching Through Georgia (5)
EMR 8677	MACDUFF, G. (Arr.)	Morning Has Broken (5)
EMR 8564	MACDUFF, G. (Arr.)	Scotland The Brave (5)
EMR 927N	MANCINI, Henry	The Pink Panther
EMR 301N	MARCELLO, B.	Adagio - Largo - Allegretto
EMR 2065N	MENDELSSOHN, F.	Auf Flügeln des Gesanges
EMR 202N	MONTI, Vittorio	Csardas (version in C minor)
EMR 2195N	MONTI, Vittorio	Csardas (version in D minor)

## Bass Trombone & Piano (Fortsetzung - Continued - Suite)

EMR 8655	MORTIMER, J.G. (Arr.)	La Cucaracha (5)
EMR 8545	MORTIMER, J.G. (Arr.)	Scarborough Fair (5)
EMR 923N	MORTIMER, J.G. (Arr.)	The Beatles (8)
EMR 8522	MORTIMER, J.G. (Arr.)	The Last Rose Of Summer (5)
EMR 2151N	MORTIMER, John G.	Happy Birthday
EMR 15016	NAULAIS, Jérôme	La Cueva Del Dragon
EMR 2283N	NORIS, Günter	El Toro
EMR 8589	OLIVER, Julian (Arr.)	Deep River (5)
EMR 306N	PEZEL, Johann	Suite de Danses (Sturzenegger)
EMR 304N	PORPORA, N.A.	Sonate As-Dur (Sturzenegger)
EMR 2496	PRYOR, Arthur	Annie Laurie
EMR 4239	PRYOR, Arthur	The Supervisor
EMR 303N	PURCELL, Henry	Suite (Sturzenegger)
EMR 2029N	RAVEL, Maurice	Pièce en forme de Habanera (Hilgers)
EMR 2170N	RICH / RANDOLPH	Benny Hill (Yackety Sax)
EMR 8655	RICHARDS, Scott (Arr.)	Home On The Range (5)
EMR 266N	RIMSKY-KORSAKOV	The Flight of the Bumble Bee
EMR 4435	ROCHA, Gilles	Ave Maria
EMR 4332	ROCHA, Gilles	Derniers Mots...
EMR 4332	ROCHA, Gilles	Last Words...
EMR 4332	ROCHA, Gilles	Letzte Worte...
EMR 221	SACHSE, Ernst	Concertino in F (Wagenhäuser)
EMR 2174N	SAINT-SAËNS, C.	Romance
EMR 2025	SCHNYDER, Daniel	Sonata
EMR 4387	SCHUBERT, Franz	Ave Maria (Oliver)
EMR 6073N	SCHUBERT, Franz	Serenade D 957 N° 4
EMR 8589	SEDLAK, Jan (Arr.)	Kalinka (5)
EMR 8633	SEDLAK, Jan (Arr.)	Shalom (5)
EMR 8677	SEDLAK, Jan (Arr.)	Two Guitars (5)
EMR 8655	STRAUSS, Johann	Emperor Waltz (5)
EMR 8611	STRAUSS, Johann	Radetzky March (5)
EMR 8564	STRAUSS, Johann	Rosen aus dem Süden (5)
EMR 8633	STRAUSS, Johann	Tritsch-Tratsch-Polka (5)
EMR 8633	SUBA, Eduardo (Arr.)	Cielito Lindo (5)
EMR 8589	SUBA, Eduardo (Arr.)	La Paloma (5)
EMR 8611	SUBA, Eduardo (Arr.)	Tico-Tico (5)
EMR 2285N	TAILOR, Norman	El Choclo
EMR 8545	TAILOR, Norman	Inca Dance (5)
EMR 2291N	TAILOR, Norman	Sousa Medley
EMR 8522	TAILOR, Norman (Arr.)	Danny Boy (5)
EMR 211	TIBOR, Georg	Introduzione - Tema e Variazioni
EMR 2290N	TRADITIONAL	O Sole Mio (Richards)
EMR 2293N	TRADITIONAL	O Sole Mio (Saurer)
EMR 8522	VARIOUS	Greatest Hits Volume 1 (5)
EMR 8545	VARIOUS	Greatest Hits Volume 2 (5)
EMR 8564	VARIOUS	Greatest Hits Volume 3 (5)
EMR 8589	VARIOUS	Greatest Hits Volume 4 (5)
EMR 8611	VARIOUS	Greatest Hits Volume 5 (5)
EMR 8633	VARIOUS	Greatest Hits Volume 6 (5)
EMR 8655	VARIOUS	Greatest Hits Volume 7 (5)
EMR 8677	VARIOUS	Greatest Hits Volume 8 (5)
EMR 19022	VERDI, Giuseppe	Chorus Of Hebrew Slaves
EMR 5353	VERGERE, Cédric	Four Of A Kind
EMR 4382	VERGERE, Cédric	Metabolic
EMR 2033	VON SIEBENTHAL	Our Mission
EMR 2296N	WEBER, C.M. von	Romance

## BASS TROMBONE & PIANO (GUITAR, BASS, DRUMS OPTIONAL)

EMR 2151N	MORTIMER, J.G.	Happy Birthday
-----------	----------------	----------------

## BASS TROMBONE & PIANO / KEYBOARD (DRUMS OPTIONAL)

EMR 2227N	RICHARDS, Scott	Latin Fever
-----------	-----------------	-------------

## BASS TROMBONE & CD PLAYBACK

EMR 2310	FILLMORE, Henry	15 Rags + CD
EMR 4473	VARIOUS	20 Sacred Hits + CD

## BASS TROMBONE & BRASS BAND

EMR 1168	ARMITAGE, Dennis	Way Down Blues
EMR 1052	MONTI, Vittorio	Csardas (in C minor)
EMR 2942	MONTI, Vittorio	Csardas (in D minor)
EMR 3725	NAULAIS, Jérôme	La Cueva del Dragon
EMR 1266	RIMSKY-KORSAKOV	The Flight Of The Bumble Bee
EMR 1266	RIMSKY-KORSAKOV	Hummelflug
EMR 1266	RIMSKY-KORSAKOV	Le vol du bourdon
EMR 1881	SACHSE, Ernst	Concertino (F-Dur)
EMR 1259	VON SIEBENTHAL	Our Mission