

# AdventsgrüÙe



Partitur (4-zeilig)  
(Condensed Score)

Zusammenstellung u. Arr.:  
Eberhard Uhlig

*Ruhig* 1 Tausend Sterne sind ein Dom

1. Posaune in C *mf* *mp*

2. Posaune in C *mf* *mp*

3. Posaune in C *mf* *mp*

4. Posaune in C *mf* *mp*

6

1. Pos. *mf* *f*

2. Pos. *mf* *f*

3. Pos. *mf* *f*

4. Pos. *mf* *f*

10

1. Pos. *mp* *f*

2. Pos. *mp* *f*

3. Pos. *mp* *f*

4. Pos. *mp* *f*

[www.ewoton.de](http://www.ewoton.de)

AdventsgrüÙe  
Partitur 4-zeilig  
(Condensed Score)

29

1. Pos.

2. Pos.

3. Pos.

4. Pos.

*mf*

*p* *f*

*Meno*

33

1. Pos.

2. Pos.

3. Pos.

4. Pos.

*p* *f*

*Meno*

*Meno*

*Meno*

③ Still senkt sich die Nacht hernieder  
Ruhig

37

1. Pos.

2. Pos.

3. Pos.

4. Pos.

*mp*

AdventsgrüÙe  
Partitur 4-zeilig  
(Condensed Score)

55

1. Pos.

2. Pos.

3. Pos.

4. Pos.

*mf* *f* *mf* *p* *f*

Bewegt

60

This block contains the musical score for measures 55 to 60. It is a four-part setting with staves labeled 1. Pos. through 4. Pos. The music is in bass clef with a key signature of two flats. Dynamics include *mf*, *f*, and *p*. A 'Bewegt' (Allegretto) tempo marking is present. A large watermark '© EWOTON Musikverlag' is overlaid on the score.

1. Pos.

2. Pos.

3. Pos.

4. Pos.

*mf* *mf* *mf* *mf*

This block contains the musical score for measures 60 to 63. It continues the four-part setting with staves 1. Pos. through 4. Pos. The music is in bass clef with a key signature of two sharps. Dynamics are marked as *mf*. A large watermark '© EWOTON' is overlaid on the score.

⑤ Oh Bethlehem, du kleine Stadt

64

1. Pos.

2. Pos.

3. Pos.

4. Pos.

*p* *p* *p* *p*

This block contains the musical score for measures 64 to 67. It is a four-part setting with staves 1. Pos. through 4. Pos. The music is in bass clef with a key signature of two sharps. Dynamics are marked as *p*. A large watermark 'www.ewoton.de' is overlaid on the score.

AdventsgrüÙe  
Partitur 4-zeilig  
(Condensed Score)

6 Vom Himmel hoch, ihr Englein kommt

80

1. Pos.

2. Pos.

3. Pos.

4. Pos.

*mf* *mp* *f*

85

1. Pos.

2. Pos.

3. Pos.

4. Pos.

*mf* *f*

90

1. Pos.

2. Pos.

3. Pos.

4. Pos.

1. *mf*

2. *rall.* *Meno*

www.ewoton.de

# Adventsgrüße



1. Posaune in C  
(Trombone 1 B.C.)

Zusammenstellung u. Arr.:  
Eberhard Uhlig

Ruhig

1 Tausend Sterne sind ein Dom

*mf* *mp*

6

*mf* *f*

10

*mp* *f*

15

1

*mf* *p*

21

rall. ....

2 Inmitten der Nacht

Bewegt

*f* *p* *mf* *f*

27

*p* *f*

32

Meno

*p* *f*

37

3 Still senkt sich die Nacht hernieder

Ruhig

4

*mf* *f* *p*

AdventsgrüÙe  
1. Posaune in C

4 Maria durch ein Dornwald ging

49 *mf*

55 *mf* *p* *f*

Musical notation for the first system of 'Maria durch ein Dornwald ging'. It consists of two staves of music in bass clef with a key signature of one flat. The first staff starts at measure 49 and ends at measure 54. The second staff starts at measure 55 and ends at measure 59. Dynamics include *mf*, *p*, and *f*. There are slurs and accents throughout.

Bewegt

60 *mf*

Musical notation for the second system of 'Maria durch ein Dornwald ging'. It consists of two staves of music in bass clef with a key signature of one flat. The first staff starts at measure 60 and ends at measure 63. The second staff starts at measure 64 and ends at measure 67. Dynamics include *mf*. There are slurs and accents throughout.

5 Oh Bethlehem, du kleine Stadt

64 *p*

68 *mf*

Musical notation for the first system of 'Oh Bethlehem, du kleine Stadt'. It consists of two staves of music in bass clef with a key signature of one flat. The first staff starts at measure 64 and ends at measure 67. The second staff starts at measure 68 and ends at measure 71. Dynamics include *p* and *mf*. There are slurs and accents throughout.

72 *p*

Musical notation for the second system of 'Oh Bethlehem, du kleine Stadt'. It consists of two staves of music in bass clef with a key signature of one flat. The first staff starts at measure 72 and ends at measure 75. The second staff starts at measure 76 and ends at measure 79. Dynamics include *p*. There are slurs and accents throughout.

76 *f* *rall.* *mf*

Musical notation for the third system of 'Oh Bethlehem, du kleine Stadt'. It consists of two staves of music in bass clef with a key signature of one flat. The first staff starts at measure 76 and ends at measure 79. The second staff starts at measure 80 and ends at measure 83. Dynamics include *f*, *rall.*, and *mf*. There are slurs and accents throughout.

6 Vom Himmel hoch, ihr Englein kommt

80 *mp*

Musical notation for the first system of 'Vom Himmel hoch, ihr Englein kommt'. It consists of two staves of music in bass clef with a key signature of one flat. The first staff starts at measure 80 and ends at measure 83. The second staff starts at measure 84 and ends at measure 87. Dynamics include *mp*. There are slurs and accents throughout.

83 *f* *f*

Musical notation for the second system of 'Vom Himmel hoch, ihr Englein kommt'. It consists of two staves of music in bass clef with a key signature of one flat. The first staff starts at measure 83 and ends at measure 86. The second staff starts at measure 87 and ends at measure 90. Dynamics include *f*. There are slurs and accents throughout.

88

Musical notation for the third system of 'Vom Himmel hoch, ihr Englein kommt'. It consists of two staves of music in bass clef with a key signature of one flat. The first staff starts at measure 88 and ends at measure 91. The second staff starts at measure 92 and ends at measure 95. Dynamics include *f*. There are slurs and accents throughout.

91 *mf* *1.* *2.* *rall.* *Meno*

Musical notation for the fourth system of 'Vom Himmel hoch, ihr Englein kommt'. It consists of two staves of music in bass clef with a key signature of one flat. The first staff starts at measure 91 and ends at measure 94. The second staff starts at measure 95 and ends at measure 98. Dynamics include *mf*. There are slurs and accents throughout.

www.ewoton.de

# Adventsgrüße

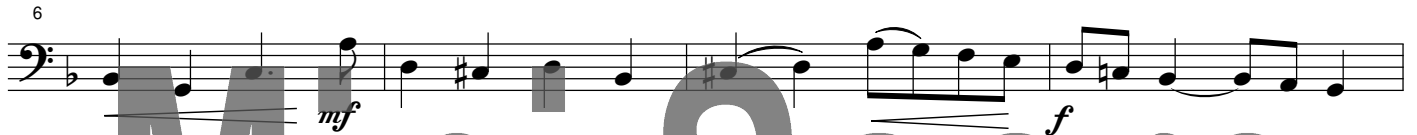


4. Posaune in C  
(Trombone 4 B.C.)

Zusammenstellung u. Arr.:  
Eberhard Uhlig

Ruhig

① Tausend Sterne sind ein Dom



② Inmitten der Nacht  
Bewegt



③ Still senkt sich die Nacht hernieder  
Ruhig



AdventsgrüÙe  
4. Posaune in C

49 ④ Maria durch ein Dornwald ging

49 *mf* *p*

55

55 *mf* *p* *f*

60 **Bewegt**

60 *mf*

64 ⑤ Oh Bethlehem, du kleine Stadt

64 *p*

68

72

72 *p* *f*

77

77 *rall.*

80 ⑥ Vom Himmel hoch, ihr Englein kommt

80 *mf* *mp*

84

84 *f* *mf*

87

87 *f*

91

91 1. 2. *rall.* *Meno*

www.ewoton.de