

À la mémoire de Paolo Longinotti, dédié à Olé Edvard Antonsen

# 1. Etude de style ibérique

(ca 2'50"")

Rosario MACALUSO (\*1956)

**Deciso**

*f* *mf* *ad lib.* *cresc.* *f* *A tempo* ( $\pm 112$  ♩) *mp* *mf* ( $\pm 66$  ♩) *molto ritenuto* *cantabile senza rigore* *tr* *allargando* ( $\pm 184$  ♩) *più mosso* *poco*

Amicalement à Jean-Pierre Mathez

## 2. Etude de style jazz contemporain

(ca 2'50"')

Sordina "Robinson" (cup)

(♩ 56) Lento (senza rigore)

Rosario MACALUSO (\*1956)

Musical score for the first section, "Sordina Robinson" (cup), in 4/4 time. The tempo is Lento (senza rigore) with a metronome marking of 56. The score begins with a dynamic marking of *mf*. The melody features a series of eighth notes with accents and slurs, including a triplet of eighth notes. The key signature has one flat (B-flat). A large red watermark is overlaid diagonally across the score, reading "© World copyright by Editions Bim www.editions-bim.com".

Musical score for the second section, "Sordina harmon" (wa - wa), in 3/8 time. The tempo is *mp* *rythmé* with a metronome marking of 120. The score begins with a dynamic marking of *mp*. The melody features a series of eighth notes with accents and slurs, including a triplet of eighth notes. The key signature has one flat (B-flat). A large red watermark is overlaid diagonally across the score, reading "© World copyright by Editions Bim www.editions-bim.com".

Musical score for the final section, in 9/16 time. The tempo is *poco*. The score begins with a dynamic marking of *poco*. The melody features a series of eighth notes with accents and slurs, including a triplet of eighth notes. The key signature has one flat (B-flat). A large red watermark is overlaid diagonally across the score, reading "© World copyright by Editions Bim www.editions-bim.com".

Dédié à Manu Mellaerts

# 3. Oriental

(ca 2'30"")

Rosario MACALUSO (\*1956)

Quasi cadenza

*f*

*mf cantabile*

*f* *cort* *p*

*poco*

*rit.* *mf*

In tempo come una danza

*rit.* *mf*

Dédié à Fabio Caggiula

# 4. Tarantella

(ca 1'20"")

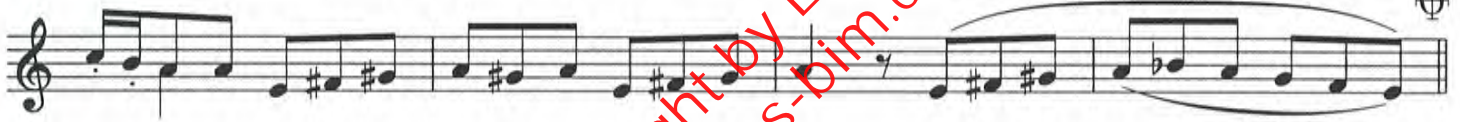
Rosario MACALUSO (\*1956)

(± 100 ♩.)



♩

a tempo (± 132 ♩.)



2<sup>e</sup> x

1<sup>e</sup> x



*f*



*mf*



Dédié à Benny Wyam

# 5. Pampa

(ca 1'30")

Rosario MACALUSO (\*1956)

(± 88 ♩)

*mp*

*f* *mf*

*mf*

*mf* *f* *mf*

*mf*

*cantabile*

*mf*

Dédié à Guy Touvron

# 6. Kiosque

(ca 1'40"")

(± 88 ♩) Polka burlesque

Rosario MACALUSO (\*1956)

The first part of the score consists of four staves of music in 2/4 time. The first staff begins with a treble clef, a key signature of one flat (B-flat), and a tempo marking of *mf*. It features a series of eighth and sixteenth notes, including a triplet of eighth notes. The second staff continues the melody with a *poco* dynamic marking. The third and fourth staves are filled with complex rhythmic patterns, including multiple triplet markings. The piece concludes with a double bar line.

Cadenza più o meno misurata

The Cadenza section is a single staff of music in 2/4 time, featuring a series of eighth notes with triplet markings. It ends with a double bar line and a repeat sign.

(± 66 ♩.) Tempo di Valzer

The Tempo di Valzer section consists of two staves of music in 3/4 time. The first staff begins with a treble clef, a key signature of one flat (B-flat), and a tempo marking of *mp*. It features a series of eighth and sixteenth notes. The second staff continues the melody with triplet markings and concludes with a double bar line and a *più calmo* dynamic marking.

Dédié à Håkan Hardenberger

# 7. Balkan (danse bulgare)

(ca 1'30")

Rosario MACALUSO (\*1956)

♩ = 162

*mf molto leggero*

*mf*

*f* *mf*

*molto cantabile*

*mp sub. crescendo poco a poco* *ff* *mf*

*meno mosso*